



Compound Microscope Lab

Directions:

1. Obtain a compound microscope and one of the slide sets (1,2,3, or 4)
2. Look at the samples from your slide set under low, medium and high power.
3. Look through all of the photos on the following pages and identify each slide from your set by specimen number. Note: there a few extra photos not found in your slide sets.
4. Place the specimen number for each slide in your set next to the specimen name on the right. Place all answers on this page (first page).
5. Return your slide set and try another.

Remember: Never use coarse focus when in high power!!

<u>Slide Set 1</u>	Specimen #
Fly Leg	_____
Human Blood Cells	_____
Muscle Tissue	_____
Nematode (round worm)	_____
Gold Fish Scale	_____

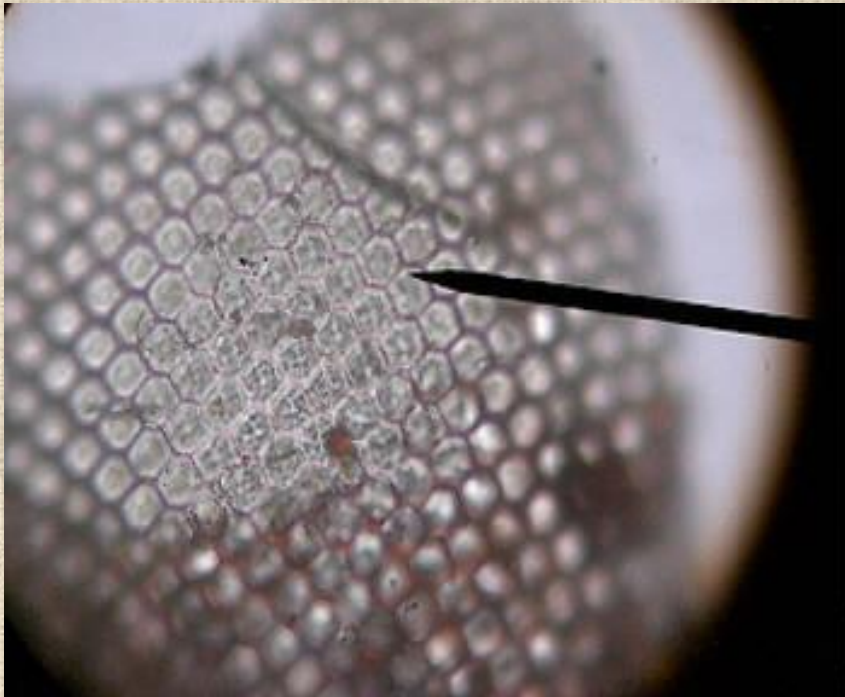
<u>Slide Set 2</u>	Specimen #
Rabbit Hair	_____
Lung Tissue (non-smoker)	_____
Butterfly Scale	_____
Duck Feather	_____
Bone Cells	_____

<u>Slide Set 3</u>	Specimen #
Corn Leaf	_____
Pheasant 'Fur'	_____
Paramecium (single celled organism)	_____
Spider Leg	_____
Lung Tissue (smoker)	_____

<u>Slide Set 4</u>	Specimen #
Fly Wing	_____
Radiolarian (star shaped)	_____
Plant Louse	_____
Bee Eye	_____
Frog Blood Cells	_____

Specimen #1

(High Power)



Slide Set 1

Fly Leg
Human Blood Cells
Muscle Tissue
Nematode (round worm)
Gold Fish Scale

Slide Set 2

Rabbit Hair
Lung Tissue (non-smoker)
Butterfly Scale
Duck Feather
Bone Cells

Slide Set 3

Corn Leaf
Pheasant 'Fur'
Paramecium (single celled organism)
Spider Leg
Lung Tissue (smoker)

Slide Set 4

Fly Wing
Radiolarian (star shaped)
Plant Louse
Bee Eye
Frog Blood Cells

Compound Microscope Lab

Specimen #2

(Medium Power)



Slide Set 1

Fly Leg
Human Blood Cells
Muscle Tissue
Nematode (round worm)
Gold Fish Scale

Slide Set 2

Rabbit Hair
Lung Tissue (non-smoker)
Butterfly Scale
Duck Feather
Bone Cells

Slide Set 3

Corn Leaf
Pheasant 'Fur'
Paramecium (single celled organism)
Spider Leg
Lung Tissue (smoker)

Slide Set 4

Fly Wing
Radiolarian (star shaped)
Plant Louse
Bee Eye
Frog Blood Cells

Compound Microscope Lab

Specimen #3

(Low Power)



Slide Set 1

Fly Leg
Human Blood Cells
Muscle Tissue
Nematode (round worm)
Gold Fish Scale

Slide Set 2

Rabbit Hair
Lung Tissue (non-smoker)
Butterfly Scale
Duck Feather
Bone Cells

Slide Set 3

Corn Leaf
Pheasant 'Fur'
Paramecium (single celled organism)
Spider Leg
Lung Tissue (smoker)

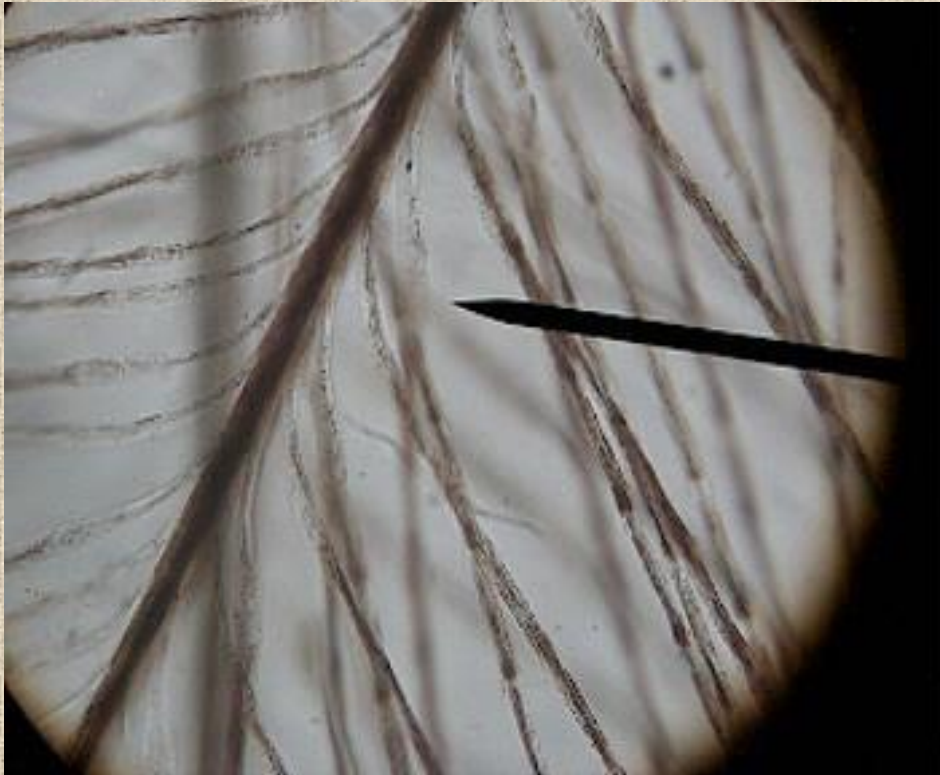
Slide Set 4

Fly Wing
Radiolarian (star shaped)
Plant Louse
Bee Eye
Frog Blood Cells

Compound Microscope Lab

Specimen #4

(High Power)



Slide Set 1

Fly Leg
Human Blood Cells
Muscle Tissue
Nematode (round worm)
Gold Fish Scale

Slide Set 2

Rabbit Hair
Lung Tissue (non-smoker)
Butterfly Scale
Duck Feather
Bone Cells

Slide Set 3

Corn Leaf
Pheasant 'Fur'
Paramecium (single celled organism)
Spider Leg
Lung Tissue (smoker)

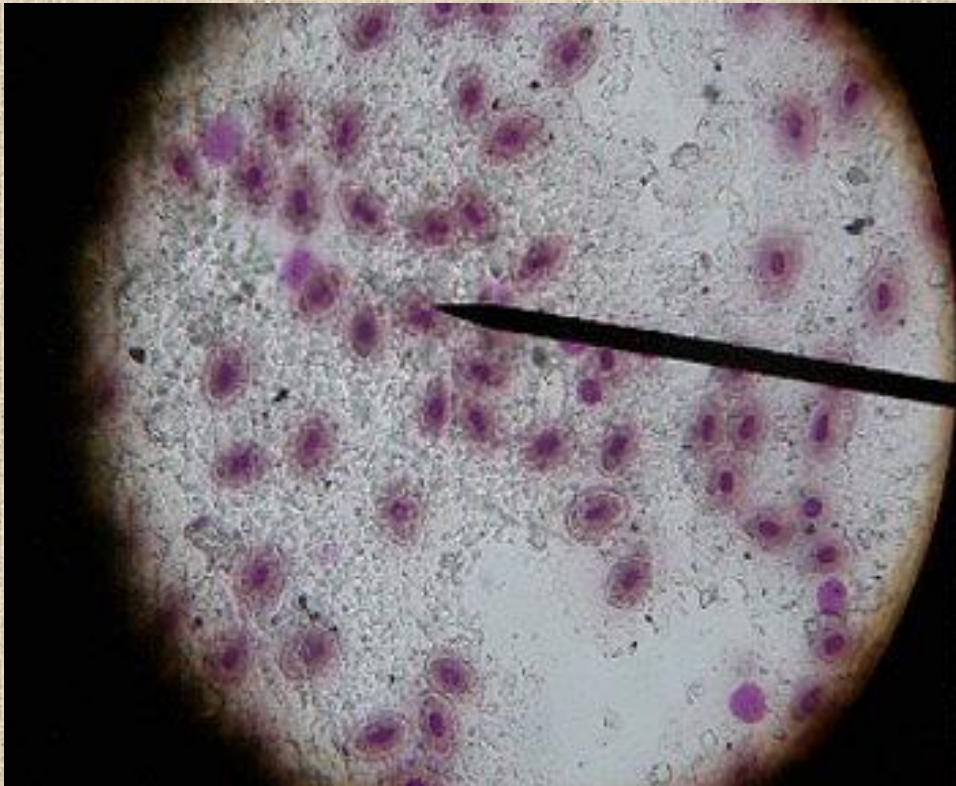
Slide Set 4

Fly Wing
Radiolarian (star shaped)
Plant Louse
Bee Eye
Frog Blood Cells

Compound Microscope Lab

Specimen #5

(High Power)



Slide Set 1

Fly Leg
Human Blood Cells
Muscle Tissue
Nematode (round worm)
Gold Fish Scale

Slide Set 2

Rabbit Hair
Lung Tissue (non-smoker)
Butterfly Scale
Duck Feather
Bone Cells

Slide Set 3

Corn Leaf
Pheasant 'Fur'
Paramecium (single celled organism)
Spider Leg
Lung Tissue (smoker)

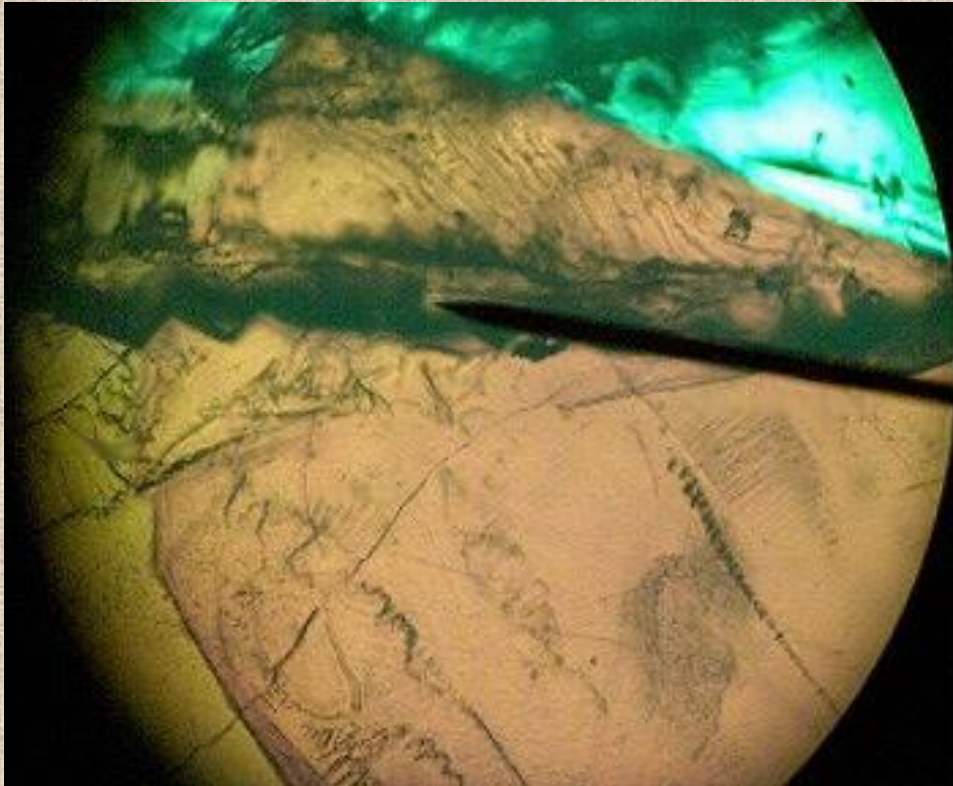
Slide Set 4

Fly Wing
Radiolarian (star shaped)
Plant Louse
Bee Eye
Frog Blood Cells

Compound Microscope Lab

Specimen #6

(Medium Power)



Slide Set 1

Fly Leg
Human Blood Cells
Muscle Tissue
Nematode (round worm)
Gold Fish Scale

Slide Set 2

Rabbit Hair
Lung Tissue (non-smoker)
Butterfly Scale
Duck Feather
Bone Cells

Slide Set 3

Corn Leaf
Pheasant 'Fur'
Paramecium (single celled organism)
Spider Leg
Lung Tissue (smoker)

Slide Set 4

Fly Wing
Radiolarian (star shaped)
Plant Louse
Bee Eye
Frog Blood Cells

Compound Microscope Lab

Specimen #7

(High Power)



Slide Set 1

Fly Leg
Human Blood Cells
Muscle Tissue
Nematode (round worm)
Gold Fish Scale

Slide Set 2

Rabbit Hair
Lung Tissue (non-smoker)
Butterfly Scale
Duck Feather
Bone Cells

Slide Set 3

Corn Leaf
Pheasant 'Fur'
Paramecium (single celled organism)
Spider Leg
Lung Tissue (smoker)

Slide Set 4

Fly Wing
Radiolarian (star shaped)
Plant Louse
Bee Eye
Frog Blood Cells

Compound Microscope Lab

Specimen #8

(High Power)



Slide Set 1

Fly Leg
Human Blood Cells
Muscle Tissue
Nematode (round worm)
Gold Fish Scale

Slide Set 2

Rabbit Hair
Lung Tissue (non-smoker)
Butterfly Scale
Duck Feather
Bone Cells

Slide Set 3

Corn Leaf
Pheasant 'Fur'
Paramecium (single celled organism)
Spider Leg
Lung Tissue (smoker)

Slide Set 4

Fly Wing
Radiolarian (star shaped)
Plant Louse
Bee Eye
Frog Blood Cells

Compound Microscope Lab

Specimen #9

(High Power)



Slide Set 1

Fly Leg
Human Blood Cells
Muscle Tissue
Nematode (round worm)
Gold Fish Scale

Slide Set 2

Rabbit Hair
Lung Tissue (non-smoker)
Butterfly Scale
Duck Feather
Bone Cells

Slide Set 3

Corn Leaf
Pheasant 'Fur'
Paramecium (single celled organism)
Spider Leg
Lung Tissue (smoker)

Slide Set 4

Fly Wing
Radiolarian (star shaped)
Plant Louse
Bee Eye
Frog Blood Cells

Compound Microscope Lab

Specimen #10

(High Power)



Slide Set 1

Fly Leg
Human Blood Cells
Muscle Tissue
Nematode (round worm)
Gold Fish Scale

Slide Set 2

Rabbit Hair
Lung Tissue (non-smoker)
Butterfly Scale
Duck Feather
Bone Cells

Slide Set 3

Corn Leaf
Pheasant 'Fur'
Paramecium (single celled organism)
Spider Leg
Lung Tissue (smoker)

Slide Set 4

Fly Wing
Radiolarian (star shaped)
Plant Louse
Bee Eye
Frog Blood Cells

Compound Microscope Lab

Specimen #11

(High Power)



Slide Set 1

Fly Leg
Human Blood Cells
Muscle Tissue
Nematode (round worm)
Gold Fish Scale

Slide Set 2

Rabbit Hair
Lung Tissue (non-smoker)
Butterfly Scale
Duck Feather
Bone Cells

Slide Set 3

Corn Leaf
Pheasant 'Fur'
Paramecium (single celled organism)
Spider Leg
Lung Tissue (smoker)

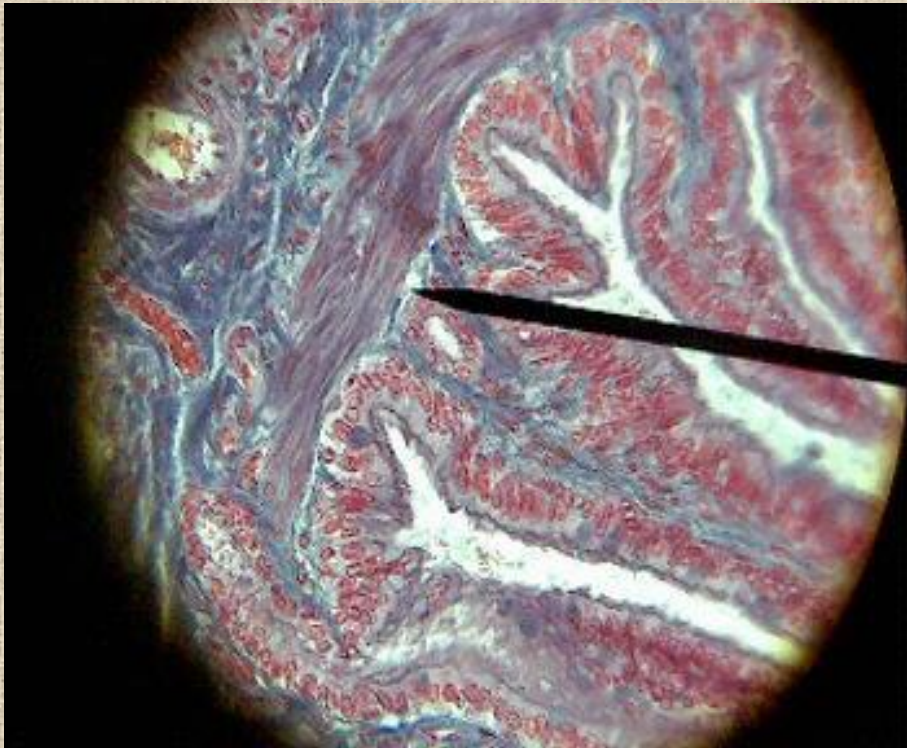
Slide Set 4

Fly Wing
Radiolarian (star shaped)
Plant Louse
Bee Eye
Frog Blood Cells

Compound Microscope Lab

Specimen #12

(High Power)



Slide Set 1

Fly Leg
Human Blood Cells
Muscle Tissue
Nematode (round worm)
Gold Fish Scale

Slide Set 2

Rabbit Hair
Lung Tissue (non-smoker)
Butterfly Scale
Duck Feather
Bone Cells

Slide Set 3

Corn Leaf
Pheasant 'Fur'
Paramecium (single celled organism)
Spider Leg
Lung Tissue (smoker)

Slide Set 4

Fly Wing
Radiolarian (star shaped)
Plant Louse
Bee Eye
Frog Blood Cells

Compound Microscope Lab

Specimen #13

(High Power)



Slide Set 1

Fly Leg
Human Blood Cells
Muscle Tissue
Nematode (round worm)
Gold Fish Scale

Slide Set 2

Rabbit Hair
Lung Tissue (non-smoker)
Butterfly Scale
Duck Feather
Bone Cells

Slide Set 3

Corn Leaf
Pheasant 'Fur'
Paramecium (single celled organism)
Spider Leg
Lung Tissue (smoker)

Slide Set 4

Fly Wing
Radiolarian (star shaped)
Plant Louse
Bee Eye
Frog Blood Cells

Compound Microscope Lab

Specimen #14

(Medium Power)



Slide Set 1

Fly Leg
Human Blood Cells
Muscle Tissue
Nematode (round worm)
Gold Fish Scale

Slide Set 2

Rabbit Hair
Lung Tissue (non-smoker)
Butterfly Scale
Duck Feather
Bone Cells

Slide Set 3

Corn Leaf
Pheasant 'Fur'
Paramecium (single celled organism)
Spider Leg
Lung Tissue (smoker)

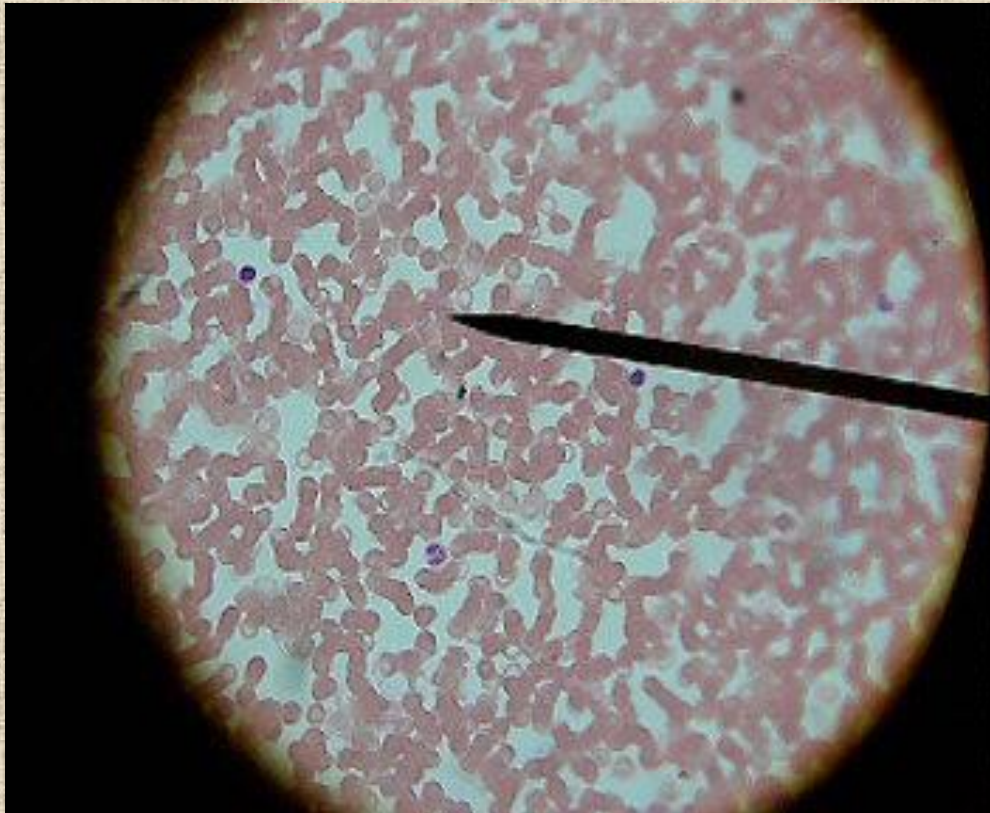
Slide Set 4

Fly Wing
Radiolarian (star shaped)
Plant Louse
Bee Eye
Frog Blood Cells

Compound Microscope Lab

Specimen #15

(High Power)



Slide Set 1

Fly Leg
Human Blood Cells
Muscle Tissue
Nematode (round worm)
Gold Fish Scale

Slide Set 2

Rabbit Hair
Lung Tissue (non-smoker)
Butterfly Scale
Duck Feather
Bone Cells

Slide Set 3

Corn Leaf
Pheasant 'Fur'
Paramecium (single celled organism)
Spider Leg
Lung Tissue (smoker)

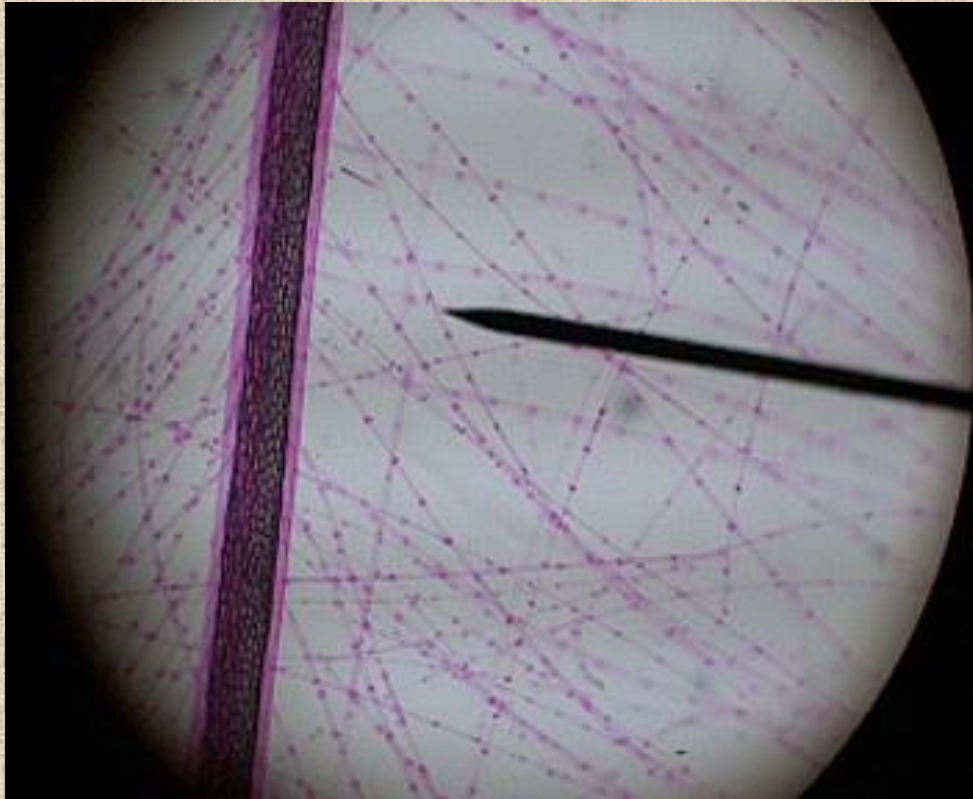
Slide Set 4

Fly Wing
Radiolarian (star shaped)
Plant Louse
Bee Eye
Frog Blood Cells

Compound Microscope Lab

Specimen #16

(Medium Power)



Slide Set 1

Fly Leg
Human Blood Cells
Muscle Tissue
Nematode (round worm)
Gold Fish Scale

Slide Set 2

Rabbit Hair
Lung Tissue (non-smoker)
Butterfly Scale
Duck Feather
Bone Cells

Slide Set 3

Corn Leaf
Pheasant 'Fur'
Paramecium (single celled organism)
Spider Leg
Lung Tissue (smoker)

Slide Set 4

Fly Wing
Radiolarian (star shaped)
Plant Louse
Bee Eye
Frog Blood Cells

Compound Microscope Lab

Specimen #17

(Low Power)



Slide Set 1

Fly Leg
Human Blood Cells
Muscle Tissue
Nematode (round worm)
Gold Fish Scale

Slide Set 2

Rabbit Hair
Lung Tissue (non-smoker)
Butterfly Scale
Duck Feather
Bone Cells

Slide Set 3

Corn Leaf
Pheasant 'Fur'
Paramecium (single celled organism)
Spider Leg
Lung Tissue (smoker)

Slide Set 4

Fly Wing
Radiolarian (star shaped)
Plant Louse
Bee Eye
Frog Blood Cells

Compound Microscope Lab

Specimen #18

(High Power)



Slide Set 1

Fly Leg
Human Blood Cells
Muscle Tissue
Nematode (round worm)
Gold Fish Scale

Slide Set 2

Rabbit Hair
Lung Tissue (non-smoker)
Butterfly Scale
Duck Feather
Bone Cells

Slide Set 3

Corn Leaf
Pheasant 'Fur'
Paramecium (single celled organism)
Spider Leg
Lung Tissue (smoker)

Slide Set 4

Fly Wing
Radiolarian (star shaped)
Plant Louse
Bee Eye
Frog Blood Cells

Compound Microscope Lab

Specimen #19

(Medium Power)



Slide Set 1

Fly Leg
Human Blood Cells
Muscle Tissue
Nematode (round worm)
Gold Fish Scale

Slide Set 2

Rabbit Hair
Lung Tissue (non-smoker)
Butterfly Scale
Duck Feather
Bone Cells

Slide Set 3

Corn Leaf
Pheasant 'Fur'
Paramecium (single celled organism)
Spider Leg
Lung Tissue (smoker)

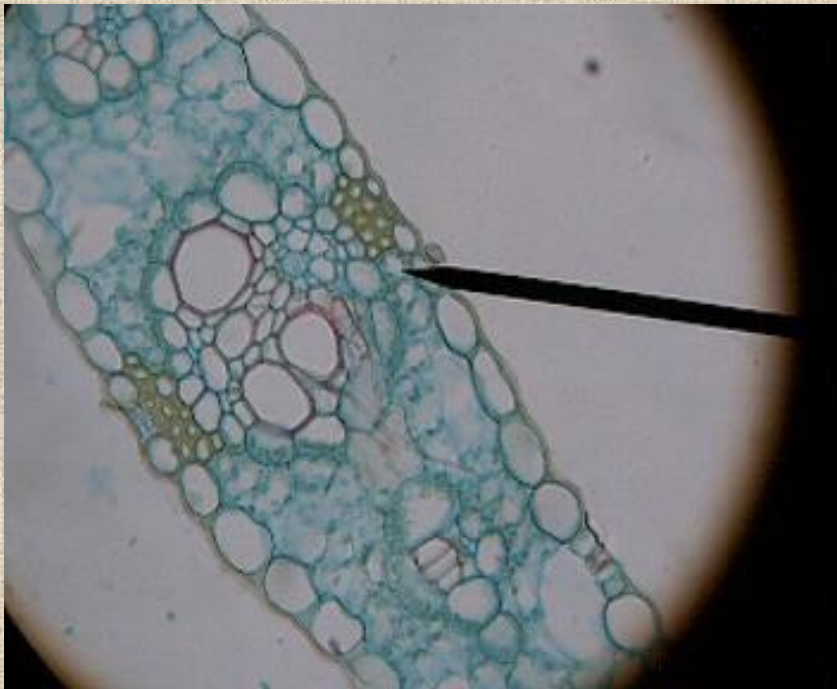
Slide Set 4

Fly Wing
Radiolarian (star shaped)
Plant Louse
Bee Eye
Frog Blood Cells

Compound Microscope Lab

Specimen #20

(High Power)



Slide Set 1

Fly Leg
Human Blood Cells
Muscle Tissue
Nematode (round worm)
Gold Fish Scale

Slide Set 2

Rabbit Hair
Lung Tissue (non-smoker)
Butterfly Scale
Duck Feather
Bone Cells

Slide Set 3

Corn Leaf
Pheasant 'Fur'
Paramecium (single celled organism)
Spider Leg
Lung Tissue (smoker)

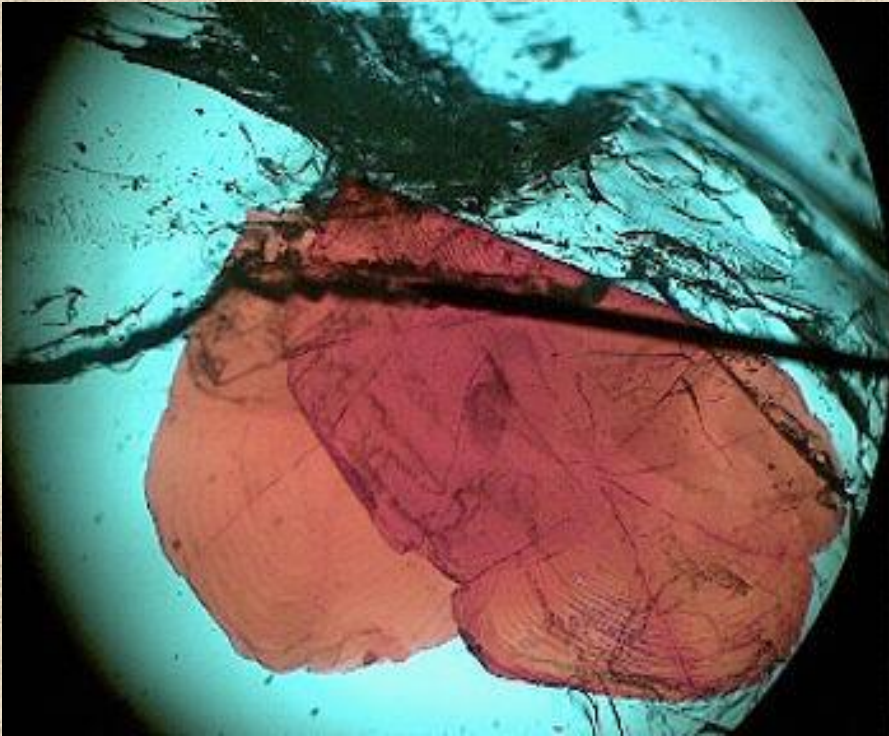
Slide Set 4

Fly Wing
Radiolarian (star shaped)
Plant Louse
Bee Eye
Frog Blood Cells

Compound Microscope Lab

Specimen #21

(Low Power)



Slide Set 1

Fly Leg
Human Blood Cells
Muscle Tissue
Nematode (round worm)
Gold Fish Scale

Slide Set 2

Rabbit Hair
Lung Tissue (non-smoker)
Butterfly Scale
Duck Feather
Bone Cells

Slide Set 3

Corn Leaf
Pheasant 'Fur'
Paramecium (single celled organism)
Spider Leg
Lung Tissue (smoker)

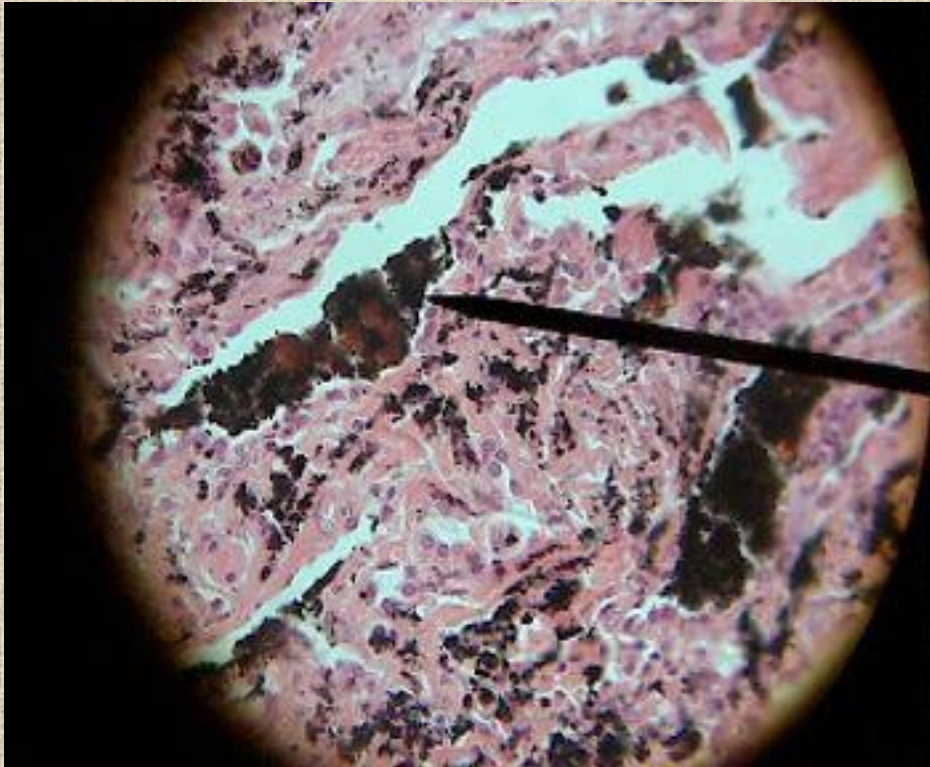
Slide Set 4

Fly Wing
Radiolarian (star shaped)
Plant Louse
Bee Eye
Frog Blood Cells

Compound Microscope Lab

Specimen #22

(High Power)



Slide Set 1

Fly Leg
Human Blood Cells
Muscle Tissue
Nematode (round worm)
Gold Fish Scale

Slide Set 2

Rabbit Hair
Lung Tissue (non-smoker)
Butterfly Scale
Duck Feather
Bone Cells

Slide Set 3

Corn Leaf
Pheasant 'Fur'
Paramecium (single celled organism)
Spider Leg
Lung Tissue (smoker)

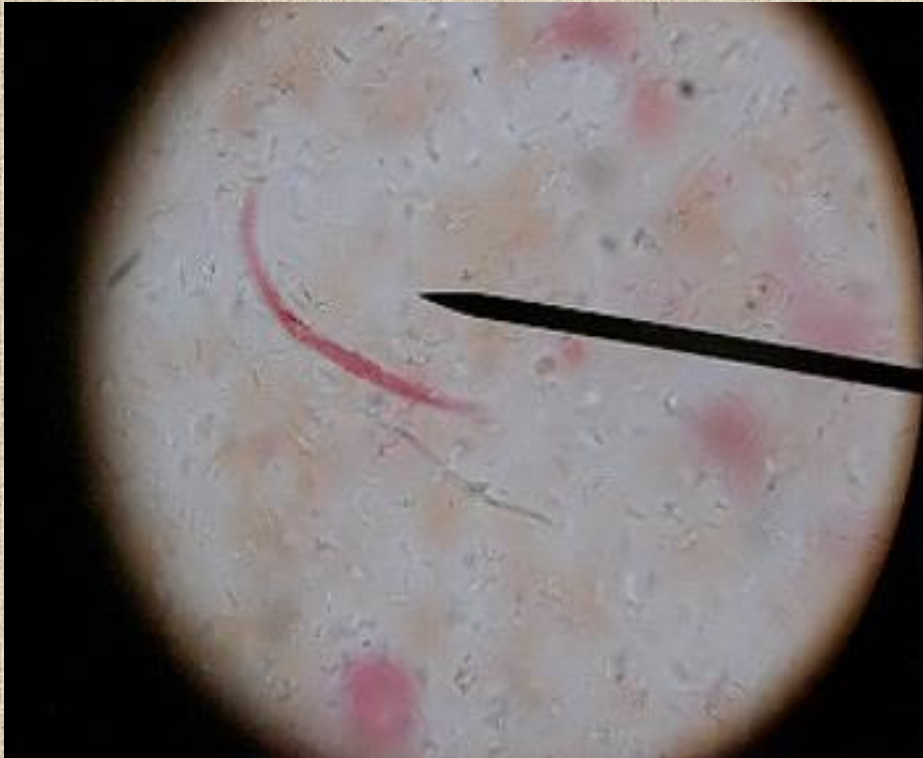
Slide Set 4

Fly Wing
Radiolarian (star shaped)
Plant Louse
Bee Eye
Frog Blood Cells

Compound Microscope Lab

Specimen #23

(High Power)



Slide Set 1

Fly Leg
Human Blood Cells
Muscle Tissue
Nematode (round worm)
Gold Fish Scale

Slide Set 2

Rabbit Hair
Lung Tissue (non-smoker)
Butterfly Scale
Duck Feather
Bone Cells

Slide Set 3

Corn Leaf
Pheasant 'Fur'
Paramecium (single celled organism)
Spider Leg
Lung Tissue (smoker)

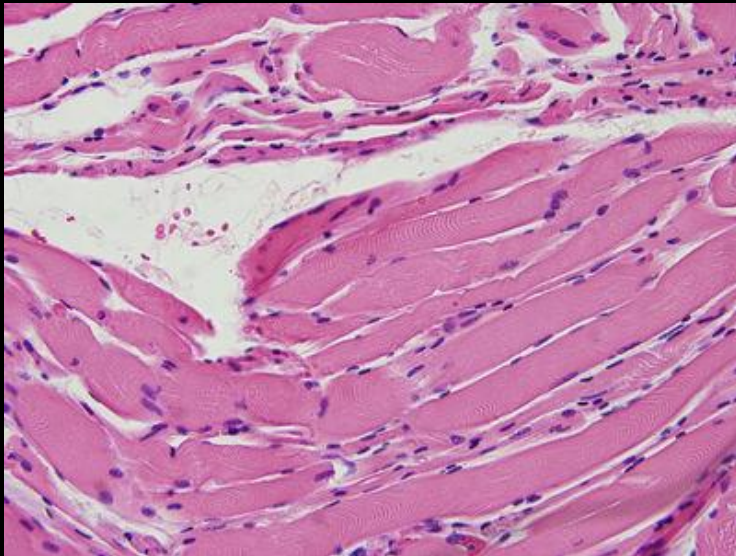
Slide Set 4

Fly Wing
Radiolarian (star shaped)
Plant Louse
Bee Eye
Frog Blood Cells

Compound Microscope Lab

Specimen #24

(Medium Power)



Slide Set 1

Fly Leg
Human Blood Cells
Muscle Tissue
Nematode (round worm)
Gold Fish Scale

Slide Set 2

Rabbit Hair
Lung Tissue (non-smoker)
Butterfly Scale
Duck Feather
Bone Cells

Slide Set 3

Corn Leaf
Pheasant 'Fur'
Paramecium (single celled organism)
Spider Leg
Lung Tissue (smoker)

Slide Set 4

Fly Wing
Radiolarian (star shaped)
Plant Louse
Bee Eye
Frog Blood Cells