




Human Biology

Module II Checklist

Human Biology Module II - Skeletal System

Complete the following activities and labs. Fill out the online study guides and save to your files. An arrow  indicates a study guide to be filled out. A **Basic** sign shows those activities that will give you a basic understanding of the concepts. Do these first if you are having difficulty. Document your work in your science website portfolio.  weebly Take all assessments.



start here 



[Module II Formative PRE-Assessment / Skeletal System](#)

This assessment will check your prior knowledge. It will not be graded but should give you an idea of which parts of Module II you should spend the most time on.



[Module II Checklist](#)

Bones and Joints

[A.D.A.M Video Library](#) (Select by topic)



[Skeleton](#) **Basic**

Skeletal System [Skeletal components](#) / [Bone Fracture Repair](#) / [Osteoarthritis](#) / [Osteoporosis](#) / [RBC Production](#) / [Shoulder Joint Dislocation](#) / [Ankle Ligament Injury](#)



[Joints](#) **Basic**

[Anatomy Arcade](#) / [Whack a Bone](#) / [Jigsaw Puzzle](#)

Basic



Interactive Body - [Skeleton Game](#)



Note: this activity will not work well on a netbook (it requires a bigger screen)

Basic



[Bone and Joint Review](#)

Basic



[Virtual Body](#) - The Skeleton

3D Interactive Anatomy - a resource for Human Anatomy

Skeletal System Anatomy

Skeletal System (can also be run online at the [Anitronica](#) website) Requires [Unity Web Player](#) to run



[Name that Bone](#)

Whoa, that's a big one!



[Get Body Smart](#)
Skeletal System



[Study Guide](#)



RMB + Rotate Mouse - Orbit Camera, LMB + Mouse Up/Down - Zoom In/Out, Mouse Scroll - Hide/Show Objects



Diagnostic Radiology

Basic



[Body Scans](#)

Basic



[Broken Bones](#)

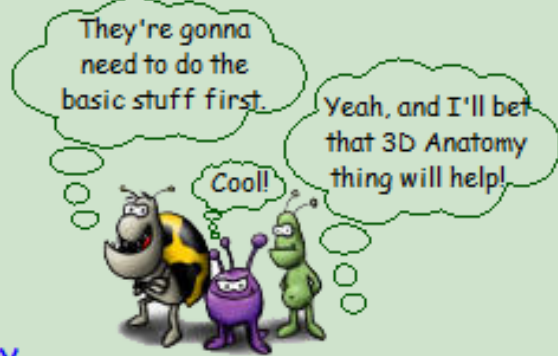
Basic



[Intro to Radiology](#)



[Arm Surgery](#) - you are the surgeon



[Radiology Reference Guide](#)

➡ ["Board Exam"](#)

[X-Rayted Lab](#) (online lab)



take the board exam before starting the lab



[Virtual Knee Surgery](#)



[Virtual Hip Replacement](#)



[MRI Game](#)

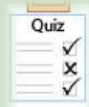


Basic



[Scoliosis](#)

SUMMATIVE



Module II Summative Assessment

This assessment will check how well you have learned the concepts in this Module. It will be graded.

This paper and pencil test is available from your teacher.

All assessments for this unit/module must be completed before beginning the next module. Assessments